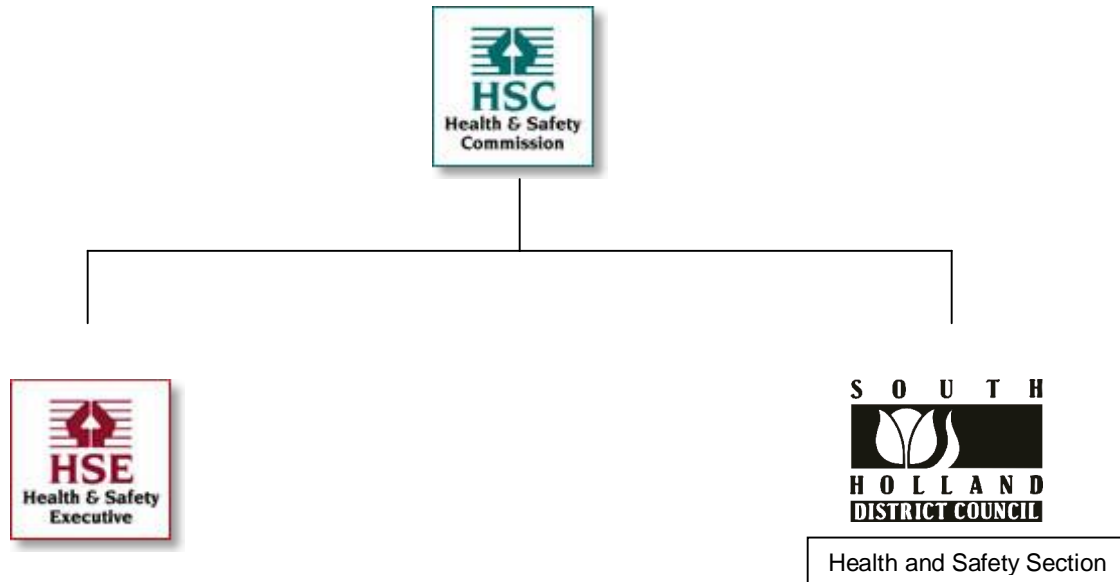


Health and Safety Enforcement Responsibility

Health and Safety enforcement in the UK is split between two government bodies, both of which are overseen by the Health and Safety Commission (HSC), The Health and Safety Executive (HSE) and Local Authorities such as South Holland District Council



The HSE and South Holland District Council Safety Inspectors carry out the same role and have the same enforcement powers but inspect different types of premises.

The HSE cover

- manufacturing,
- construction/demolition,
- railways,
- agriculture/horticulture,
- Local authority premises

South Holland District Council Health and Safety section cover

- Offices and retail premises,
- Wholesale premises,
- leisure premises such as amusement arcades,
- swimming pools,
- gyms
- nightclubs, public houses, theatres and cinemas
- catering premises

The Health and Safety Commission (HSC) have produced guidance on what you should expect when an inspector from either body visits your premises called "When an Inspector Calls" www.hse.gov.uk/pubns/hsc14.htm

If you are in business and are unsure about which enforcement sector you are allocated to, or require any further advice please feel free to contact the Health and Safety Section on 01775 761161 or at Council Offices, Priory Road, Spalding PE11 2XE, and a member of the team will be happy to advise.