

South Holland NOW

SPRING 2008



**Helping
South
Holland
thrive**



In this issue :

Results of the Holbeach Parish Plan

Applying for Council Tax Benefit

Helping South Holland's economy grow

Arts and leisure news

Recycling news



www.sholland.gov.uk



**Easter and May Bank Holiday
refuse and recycling collection
dates on the back cover**

Council News

Overview and Scrutiny ...Why is it important?

Overview and Scrutiny Panels are made up of Councillors who are not Cabinet members, these panels exist to hold the Cabinet, and individual portfolio holders to account; looking at the services we provide and how we develop our policies and scrutinising the work of our partner organisations. Their meetings are advertised and are public meetings.

This year the Panels' work programmes include: affordable housing, road safety, community transport and the Council's fly tipping and dog fouling enforcement policies.

If you have any issues you would like the Panels to consider, or would like to know more, contact your local Councillor or call the Member Services Team on 01775 764626.



Ayscoughfee Hall Weddings



Interested in getting married at Ayscoughfee Hall? Call 01775 764555 for more information

Council Tax Booklet - read it before you recycle it!

We're sending Council Tax bills this month. The booklet we send with them includes information on budgets, performance, the local Policing Summary as well as Council Tax itself. It also includes ways to reduce your bill, depending on individual circumstances, so it's well worth taking time to read it.

Sharing Information to Protect Public Funds

In common with all Local Authorities, we have a duty to protect the public purse. We are required to take part in data matching exercises, carried out by The Audit Commission's National Fraud Initiative, to prevent and detect fraud. We do this by uploading our information to their secure website.

Where necessary we share information we hold on Council Tax, benefits, housing rents, electoral registration and payroll, with other councils, government departments or other bodies responsible for auditing or administering public funds.

Save Your Time and Money.....

by switching to Direct Debit for regular payments and Debit Card for one off payments. What's more - because they're cheaper for us to process than cash or cheques, you'll help us keep Council Tax down too! Debit Card couldn't be easier - you can pay us 24 hours a day, 7 days a week.

- Direct Debit - for Council Tax, Business Rates, Rents and Debtor Accounts. Just call 01775 761161 - if we can't set it up for you over the phone there and then, we'll send you a form.

- Debit Card - for all bills.

- Over the internet on our secure website - www.sholland.gov.uk - just follow the on screen instructions or
- Our 24 hour telephone payments line - 0845 6031714.

Parade-Aid 2008 - Can You Help?



Supporters and Volunteers needed to help with everything from stewarding to pinning the tulip heads on the floats for the 50th Spalding Flower Parade - Saturday 3 May 2008 (and from 1 May to 5 May for other events). Call Chris Elliott at the Flower Parade offices on 01775 760380

Paying rent and council tax - we can help meet these bills...

The housing benefit and council tax benefit schemes are designed to help you meet these bills. Could you be missing out? You can get council tax benefit even if you own your own home outright or have a mortgage on it. Even people in work can get both these benefits if their income is low enough.

How are these benefits worked out?

We will work out if you qualify for help, taking into account your income, age and family circumstances. If you have savings

over £16,000 you will not qualify. To help you check you can visit our website: www.sholland.gov.uk and use the benefit calculator or have a look at our 'do-u-qualify' leaflets. These leaflets are also available on request.

What should you do next?

Apply now - you have nothing to lose but everything to gain. Contact Customer Services on 01775 761161 for information on how to claim and possible entitlement.



Contacting South Holland District Council

Telephone: 01775 761161 Fax: 01775 711253
Email: info@sholland.gov.uk
Web: www.sholland.gov.uk
Address: Council Offices, Priory Road, Spalding, Lincs. PE11 2XE

South Holland Now for the Blind and Partially Sighted

We can provide this magazine in large print form or on tape. If you, or any of your friends or family, would be interested please call us on 01775 761161 and let us know.

This magazine has been produced by South Holland District Council and printed by Classic Printers on environmentally friendly paper. It costs 11p per copy to produce and distribute.

Community News

Results of the Holbeach Survey

In our August edition we sent out the survey to all our readers on the Holbeach Parish Plan and we promised to give you a follow up. It is impossible to fit everything on one page but here are some recommendations.

A big response and a big thank you!

Over 1,700 people responded to this consultation, in addition to the hundreds of people the committee has spoken to at our market stalls, talks and presentations.

Responses to questionnaires produced just short of 5,000 comments, ranging from a

few words to four pages.

I would like to thank everyone who contributed to this and would give a special mention to our committee and our partners who helped make this happen. As the newly appointed 'Portfolio Holder of Place' I will work

with Holbeach Parish Council who have ownership of the plan, along with all relevant agencies, to make sure it is delivered.

Councillor Nick Worth,
Chairman, Holbeach Parish Plan Steering Group

Traffic & Transport

- More regular enforcement of speed limits in the villages.
- Traffic warden for Holbeach.
- Identify long-term car park for traders.

Crime & Safety

- Use this document to help Lincolnshire lobby for it's fair share of Police funding, to enable a larger police presence on the street.
- Re-open Boston Road Car Park, but monitor situation closely.
- To continue working with Police to apply for grants for play equipment in Hall Hill.

Health

- Ensure the medical facility at Damgate gets the services that are most needed by the Community.
- A new out-patient facility for Holbeach Hospital.
- Publicise the "Choose and Book" scheme.

Access to Services

- Discuss options for evening bus with service providers - Lincs. County Council (LCC) & Community Bus.
- Discuss with Primary Care Trust / LCC bus services to the Pilgrim Hospital.
- Maximise publicity for Holbeach Hospital and the new Children's Centre.

Town Centre Events

- Flower Show in Carter's Park
- Further develop and build on successful events such as Music in the Park and the Vintage Tractor Rally.

Holbeach High Street

- A Conservation Area Appraisal to resolve the shop front issue / general appearance of the town and that of too many take-aways.
- Businesses should be made aware of help that is available from us for rate relief and repair grants.
- Holbeach Business Forum needs to consider the merits of half day closing on a Wednesday.

Facilities & Amenities:

- Identify a building that can be used as a multi-use centre for older & younger people and migrant workers to meet in the centre of town that would be accessible to a range of agencies.
- Investigate the possibility of new toilets at the Summerfield end of town.
- An Internet Cafe for young people

Employment & Skills

- Maximise the learning opportunities and courses available to the Community.
- More basic skills training (literacy, numeracy & conversational English) signposted via Children's Centres.
- Series of open days at Holbeach Technology Park to increase awareness of available Horticultural / Agricultural / Food Courses on offer.

Environment

- More dog, litter & cigarette bins required across the parish.
- More vigorous enforcement of fly-tipping, particularly in rural areas.
- New "welcome to Holbeach" signage.

Housing & Planning

- More genuine affordable housing, to include flats above any new retail developments, where appropriate.
- Lead the way with eco-housing - look into possible sites and designs.
- Work with Planners at SHDC to produce a design for the Holbeach Depot site.

Talking POINT

Helping South Holland Thrive

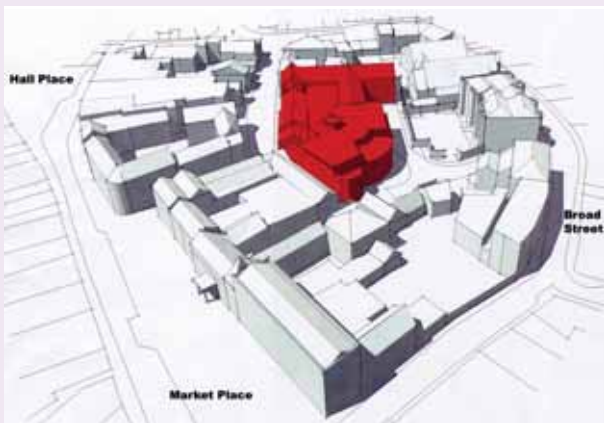
We hear all the time that the UK is experiencing an economic downturn, along with other countries in the world, so we thought that this was a good time to tell you what we are doing, with our partners, to help South Holland's economy grow.

Spalding - Red Lion Street

Since we bought the land, with funding from Lincolnshire Enterprise and Lincolnshire County Council (LCC), we have been working on the development and the design for the proposed Food Centre (part of the Spalding Masterplan) and, at the time this goes to print, we are about to put in the next round of bids for funding to build it.

quality 'wow factor' regional centre for visitors and, we hope, will encourage people locally to go into small scale food production.

We intend that the building will include a restaurant using basically local foods and there is likely to be space for hi-tech/small-scale offices for new start up office based businesses; which we hope



In addition to regenerating a derelict area of town this will create a retail space to act as a showcase for high quality food from Lincolnshire and the surrounding areas. The Centre will provide an opportunity to buy and watch food being made – i.e. hand made chocolate and/or a modern smoke house, and will be a high

will increase higher paid jobs within the district.

We are also hoping that one floor will be given over to a dedicated Further Education facility - we have been desperate to see this and we are working with the Learning and Skills council and colleges to find ways of making this work.

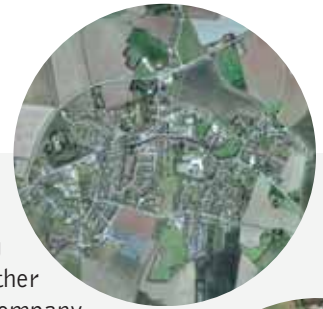
Donington

Our intention is to create additional jobs in Donington and to have a development based on the A52, which is a major East/West route.

We allocated a site at Park Farm, adjacent to the roundabout on the A52; which has now been acquired by an Irish company who are intending to develop the site for employment.

In addition, we are also

talking to another Irish company who are looking to move in to the UK and we have had several joint meetings with the Planning Department and both Irish companies and are hopeful that planning applications will be received by the time you read this.



Crowland

One of our aims is to make sure that there is sufficient land and premises available in the right places to ensure that businesses from South Holland, and those that want to move in to the district, can develop.

As part of one of the studies we had carried out – funded by East Midlands Development Agency (EMDA) - Crowland was identified as a town with potential to accommodate additional employment premises.

Because of its proximity to Peterborough, and having confirmation that the 1073 By-Pass is going to be built, together with the fact that there is currently a waiting list for District Council industrial units in Crowland, we are actively working with Lincolnshire Enterprise to acquire land to enable additional units to be delivered.



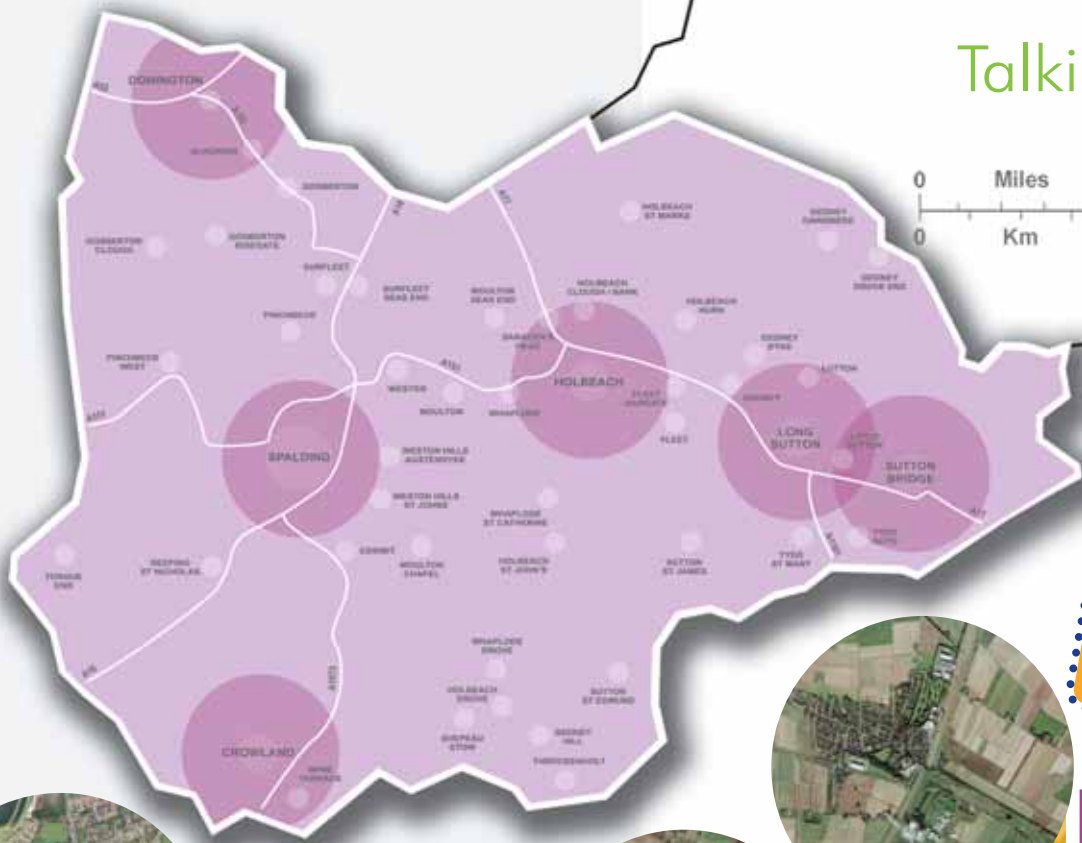
Holbeach

In conjunction with the Parish Plan, we are working with LCC to try to bring forward the development of the land earmarked for commercial use at the A151, Peppermint Junction, this would necessitate building a roundabout; which we know would also benefit the traffic situation in Holbeach.

We have spoken to several companies that would like to move on to that site and have had several meetings with LCC.

If successful, this will bring more jobs to Holbeach and will also enhance the overall shopping experience in the town.

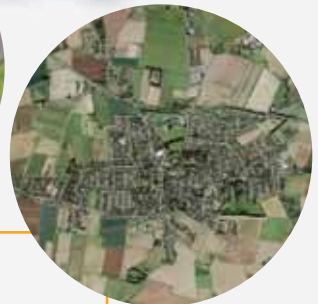
Jobs, jobs, jobs!
We have helped bring in 150 jobs to South Holland
And are hoping to bring in 400 more soon!



Money through funding

At time of going to press we are putting bids in for £5.7 million from various sources.

In the last 12 months we've attracted funding of 80K from other sources.



Reducing Crime to increase investment

When a new business sets up in any town or city they always ask if there are CCTV cameras in operation, of if there is a partnership of key people in the town set up to reduce crime.

We have worked with our partners to make sure that we have both. Not only are there now cameras in all the five towns, made possible by funding from various bodies, but there is also a Business Crime Reduction Partnership made up of the Police, retailers and ourselves which extends from Spalding to the other towns.

Long Sutton

We are aware of some unmet demand for employment space in Long Sutton and we are currently working with landowners, Planning and Lincolnshire County Council to identify the best way of meeting this demand.

Helping them Grow

We have developed a very good relationship with the University of Lincoln Holbeach Campus. Our Economic Development Team have provided advice on our aims for the area and how they can link into it. We have

also had an input into their HND Management Course; which includes students from some of our major companies and by this we are linking with them at an early stage in their career to forge future business relationships.

Sutton Bridge

100 acres of designated employment land at Wingland has been identified for industrial use and the infrastructure has been put in by LCC with European funding and facilitated by us. We are working with agents and owners of the land, and EMDA, to get the land developed.

With a view to creating additional job opportunities in Sutton Bridge we have been in discussions with two major companies who are interested in the site, neither company is involved in the food industry, which fits with our aim of diversifying South Holland's economy. At the time of going to press discussions were still ongoing.

It is likely that either company would need to use Port Sutton Bridge thus increasing the tonnage going through that facility and considerably strengthening its position.

We are looking for suggestions for Talking Point - we are asking YOU what you would like us to cover. Call us on 01775 761161 and ask for the Communications Team - you might find yourself as a roving reporter!!

Events in SOUTH HOLLAND

For details about events at the South Holland Centre and for bookings, call the Box Office on 01775 764777 between 9.30am to 8.30pm (Monday - Saturday)

- ☎ Phone for booking details
- 😊 No booking required
- South Holland District Council event

Community Events

For listings of your community events visit www.sholland.gov.uk click on 'Leisure and Culture' and 'What's On' where local events and opportunities for getting your event listed are shown.

Using the 'Get your event listed form', you can electronically submit your event to us for listing on our website.

Walking your way back to health...

This very successful free walking scheme goes from strength to strength

Walks take place at:

Crowland - Every Wednesday 10.45am from the Library

Donington - Every Tuesday 10.30am from the Ruby Hunt Centre

Spalding - Every Monday 10.30am from the Fitness Company, Spring Gardens.

Watch your local press or our website: www.sholland.gov.uk for the next walk scheme, scheduled for Long Sutton.



Please call Dan Matson, Sports Development Officer on 01775 764826 for more information.

Fen-Tastic Food and Flower Event

Sunday 20 April
Springfields Exhibition Centre, Spalding

The Fens Food and Flower Festival

Project - celebrating local produce and community spirit with a fantastic food and drink event. Free parking and entrance.

10.00am - 4.00pm.



Spalding Flower Parade 50th Anniversary

Saturday 3 May

Having returned to its original format last year, 2008's Flower Parade is set to bring colour and celebration to Spalding once again. Its' 50th Birthday is being celebrated around the town and will culminate in an explosion of activity at the Sir Halley Stewart Playing field around 3:30pm. There will be

music, stalls and entertainment throughout the day, the parade theme this year will "Thanks for the Memories"

Mayfayers Day

Monday 5 May
Sir Halley Stewart Playing Field, Spalding



Mayfayers Day offers a Charity element to the weekend's celebrations. Schools, Dance clubs, Gymnasts and Choirs will all be invited to welcome the Spring season through traditional and modern displays of the arts. Children's rides and musical entertainment will make this FREE event a great day for the family.
11.00am - 4.00pm.

GP Exercise Referral Scheme

Based at the Castle Sports Complex this scheme sees GP's referring patients for a tailor-made one-to-one exercise programme.

In April the scheme will see the addition of three other medical centres at Gosberton, Holbeach and the Munro Medical Centre, Spalding and will expand later to the Peele Leisure Centre, Long Sutton.

Sports Forums - get together and have your say!

We have set up a District Sports Forum that meets four times a year. Everyone is welcome to come along to share their thoughts, get advice, support and meet people from other clubs and

community groups. If this magazine doesn't reach you before the first meeting - 17 March (Priory Road Offices at 6.30 pm) then call 01775 761161 and ask us for the date of the next one.

Easter Sports Tour

This runs from Monday 7 April until Friday 18 April and will include over 50 diverse activities, some of which are new, facilitated by local sports clubs. The Sports Tour booklet will be distributed to every child through schools in March.



Sponsored by 

The South Holland District Council Cultural Strategy

The South Holland District Council Cultural Strategy 2007 - 2012 is now available.

The strategy outlines the Council's priorities for culture for the next 5 years and how it plans to develop cultural opportunities and facilities for the benefit of the community.

The document is available to download from www.sholland.gov.uk .

For further information contact Vicky Thomson, Community Development Manager on tel: 01775 761161 or by email: vthomson@sholland.gov.uk



If you have any events coming up then use the 'Get your event listed form' (details above) to get listed on our website.

Events at Spalding's South Holland Centre

Return to the Forbidden Planet

ACT II
Wednesday 12 to Friday 14 March

The young performers are back with a trip to the Forbidden Planet
7.30pm

The Rhythm of Life

Polka Dot Productions
Saturday 15 March

Two hours of dynamic dance and movement.
4.00pm & 7.00pm



The Elves and the Shoemakers

Mac Productions
Wednesday 19 March



A magical adaptation of an enchanting traditional story for schools and pre-school children aged 3+ with their parents or carers

11.00am EXTRA SHOW
1.30pm performance SOLD OUT

Strictly Youth Dance

Wednesday 26 March
Your chance to see young dancers showcasing their work at the Centre's annual Youth Dance Platform
7.30pm

South Holland Centre 1st Decade Celebration

With Tipitina
Friday 11 April
Come and celebrate the Centre's 10th anniversary! Sit back and enjoy or get up and dance to live boogie-woogie blues band Tipitina.
8.00pm



The Selfish Crocodile

Blunderbus Theatre Company
Saturday 12 April
A magical musical tale with colourful puppets for children aged 4-7 and their adults.
2.00pm

An Evening with Daphne Ledward And Birchgrove Garden Centre

Tuesday 15 April
Radio Lincolnshire's gardening expert
7.30pm

Albert Lee & Hogan's Heroes

Saturday 19 April



One of the finest guitarists the world has ever seen!
8.00pm

The Graduate

St Nicolas Players
Wednesday 23 to Saturday 26 April

Based on the iconic 60's film
7.30pm



The Deadline

Shifting Sands
Tuesday 29 April
Comic fantasy theatre celebrating Film Noir & dark worlds
7.30pm

Events confirmed from Tuesday 11 March to Monday 2 June 2008

Box Office: 01775 764777
To book on-line visit www.southhollandcentre.co.uk

FILM - Look out for our bi-monthly film guide from March 2008.

Sleeping Beauty

European Ballet
Friday 9 May
European Ballet return with this classic story after a stunning performance of Coppelia last year.
4.30pm & 8.00pm



Todd Gordon Trio

With Special Guest Gabriella Swallow
Thursday 29 May
'Gordon has made the Great American songbook his own'
8.00pm



SOUTH HOLLAND CENTRE

Are you getting married soon?

If so, the South Holland Centre may be the ideal venue for your wedding reception!

- Wonderful River views
- Tailor-made service and advice from experienced wedding co-ordinators
- Exclusive use of the second floor - a large airy hall and private lounge bar both with superb views
- Catering from 50 to 250 guests
- Wide choice of menu to suit all budgets and tastes
- A few dates are still available for 2008



For further information please call Jo Wheatley or Emma Dodds on 01775 764819 or e-mail: shcentre@sholland.gov.uk

Or visit our website for more information:

www.southhollandcentre.co.uk

RECYCLING



Are you doing your bit?

The new green sack scheme has already been a major success with more residents recycling more than ever!!! You can help a little bit more by flat packing cardboard and fitting as much materials in the green bags as possible (please make sure they are still a sensible weight to lift!). This helps reduce the amount of plastic bags we use.... Remember carrier bags, cardboard boxes, other coloured bags (not black) can still be used to present extra recycling for collection.

Residents may also collect one roll of additional recycling sacks (free) from the Council Offices in Priory Road (Mon - Fri) or Market House, Long Sutton (Tues & Fri).

Disposal of Batteries and Energy Efficient Light Bulbs



All types of batteries, from AA to car batteries, can be safely recycled at the Household Waste Recycling Centre, West Marsh Road, Spalding. Used Energy Saving Light Bulbs can also be taken to the site and put in the Fluorescent Tube Container to be sent for safe recycling.

Get in touch

01775 761161
 info@sholland.gov.uk
 www.sholland.gov.uk/environment/waste

Let us present (drumroll please).... World Difference or WD!

Name our Mascot Competition... winning name chosen...

After a successful Environment Day event at the Peele Leisure Centre, held in November, a winning name was chosen for our New Environment Mascot. WD will now accompany our Street Scene Co-Ordinator when visiting schools and events.



Collections over Easter and May Bank Holidays 2008

All other collections will be as normal	collection would have been due on:	leave out for collection on:
refuse	Friday 21st March	Friday 21st March
	Monday 24th March	Saturday 22nd March
	Monday 5th May	Monday 12th May
	Monday 26th May	Saturday 24th May
recycling	Friday 21st March	Friday 21st March
	Monday 24th March	Monday 31st March
	Monday 5th May	Monday 12th May
	Monday 26th May	Monday 2nd June